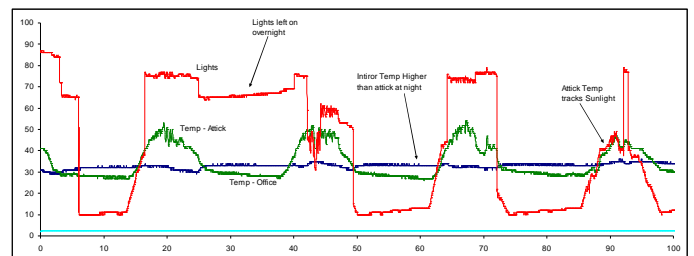
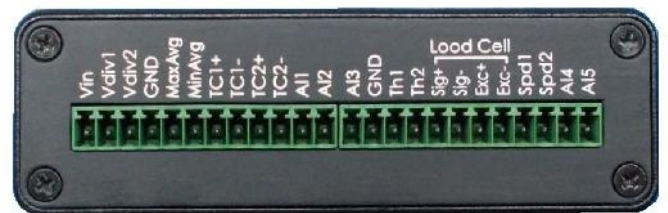


Data Acquisition Unit

DAQ-1

This Data Acquisition unit is designed for data acquisition from a wide range of mechanical power applications, including AC and DC motors as well as Internal Combustion Engines. It has several application specific input channels ready to use, including 2 separate speed channels, 2 thermo couple channels, a Load Cell input, Thermistor inputs and “Peak” and “Valley” averaging inputs for special applications. The inclusion of the use-specific amplifiers allows simple connection directly to the thermocouples or load cells with out additional power or amplifiers. Output is streamed via USB com port, and can be viewed/logged with a wide range of software, including our own DAQ viewing software. This is an ideal unit for intermediate Data Acquisition applications requiring up to 16 channels.



Features

- 16 channels total
- 10Hz, 10 Bit logging
- 2 Speed channels
- 2 Thermocouple inputs
- Load cell input (4-wire)
- 2 Thermistor Input Channels
- Max and Min peak averaging input channels
- Simple Serial Port setup
- Free computer software for Graphic Display
- 1 Year Warranty Included
- 12V DC, 13 x 11 x 3.5 cm

Overview

This compact data acquisition unit was developed for data logging from electrical motor and engine dynamometers. It features a number of special purpose inputs for easy connection to a variety of sensors. Custom software is easy to develop for special applications, and logging can be done from a wide variety of software. Included software allows graphic display as well as data logging.